



Automating the Identification Process

Wraptor™ A6500
Wire ID Printer Applicator



BradyID.com/A6500

Make the Identification Process Easier

The Wraptor™ A6500 helps you move through your work faster and takes manual processes out of your hands. With this innovative print and apply machine, you can move your productivity forward — and turn a series of labor-intensive, inefficient tasks into a modern automated process.

Benefits include:

Increased Productivity

Save time and labor by printing and applying labels in 5 seconds in a modern automated process.

Easy to Use

Includes a full color responsive touch screen and an icon based user interface for ease-of-use.

Easy to Connect

Enhanced connectivity, three USB ports and 32GB of internal memory to store commonly used job files.



Wraptor™ A6500
WIRE ID PRINTER APPLICATOR



Did You Know? Custom Label Offerings

Don't see a stock label in the size, configuration or color needed for your particular application?

Our dedicated and experienced custom quoting team can provide pricing for your unique label needs. Contact us at 1-888-272-3946



Wraptor™ A6500

Materials for Faster Application

The Wraptor A6500 Wire ID Printer Applicator accepts a variety of materials for your wire identification needs. These materials are engineered to meet the high quality standard you've come to expect from Brady.

B-427 Self-Laminating Wire Material

Color: White/Clear **Finish:** Matte

Brady's most popular wire and cable marker. Self-laminating vinyl features white printable area with a clear "tail" that wraps around marker. Tail serves as overlaminates to protect the print. Superior resistance to abrasion, solvents, water, oil and dirt.

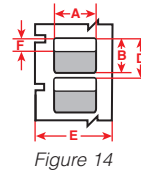


Diagram	Part Number	Material	Color	Wire Gauge	Label Width A Inch (mm)	Label Height B Inch (mm)	Vert. Repeat D Inch (mm)	Web Width E Inch (mm)	Write On Area F Inch (mm)	Labels Per Row	Labels Per Pkg	Rec. Ribbon
Fig. 14	WRAP-1-427	Vinyl	White	18-22g; 0.06" - 0.08" dia	0.500 (12.7)	0.750 (19.1)	0.875 (22.2)	0.790 (20.1)	0.375 (9.5)	1	6800	R4311
Fig. 14	WRAP-2-427	Vinyl	White	12-18g; 0.08" - 0.159" dia	1.000 (25.4)	1.000 (25.4)	1.125 (28.6)	1.290 (32.8)	0.375 (9.5)	1	5300	R4306
Fig. 14	WRAP-3-427	Vinyl	White	10-14g; 0.159" - 0.199" dia	1.000 (25.4)	1.250 (31.8)	1.375 (34.9)	1.290 (32.8)	0.500 (12.7)	1	4300	R4306
Fig. 14	WRAP-11-427	Vinyl	White	6-14g; 0.159" - 0.279" dia	0.500 (12.7)	1.500 (38.1)	1.625 (41.3)	0.790 (20.1)	0.500 (12.7)	1	3600	R4311
Fig. 14	WRAP-4-427	Vinyl	White	6-14g; 0.159" - 0.279" dia	1.000 (25.4)	1.500 (38.1)	1.625 (41.3)	1.290 (32.8)	0.500 (12.7)	1	3600	R4306
Fig. 14	WRAP-12-427	Vinyl	White	6-14g; 0.159" - 0.279" dia	2.000 (50.8)	1.500 (38.1)	1.625 (41.3)	2.290 (58.2)	0.500 (12.7)	1	3600	R4302
Fig. 14	WRAP-10-427	Vinyl	White	1/0-8g; 0.239" - 0.438" dia	1.000 (25.4)	2.250 (57.2)	2.375 (60.3)	1.290 (32.8)	0.750 (19.1)	1	2500	R4306
Fig. 14	WRAP-5-427	Vinyl	White	1/0-8g; 0.239" - 0.517" dia	1.000 (25.4)	2.500 (63.5)	2.625 (66.7)	1.790 (45.5)	0.750 (19.1)	1	2200	R4306
Fig. 14	WRAP-6-427	Vinyl	White	3/1-6g; 0.318" - 0.597" dia	2.000 (50.8)	3.000 (76.2)	3.125 (79.4)	2.290 (58.2)	1.000 (25.4)	1	1900	R4302

B-472 Polyimide Wirewrap Material

Color: White **Finish:** Matte

Polyimide wire and cable material specifically designed to self-extinguish and prevent flames from propagating. This material is ideal for wire and cable identification in extreme environments, particularly in the aerospace, defense and mass transit industries.

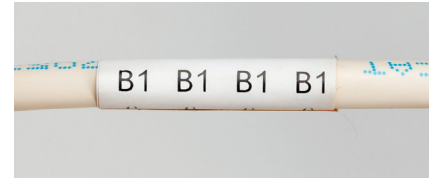
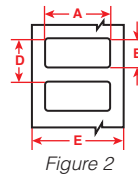


Diagram	Part Number	Material	Color	Wire Gauge	Label Width A Inch (mm)	Label Height B Inch (mm)	Vert. Repeat D Inch (mm)	Web Width E Inch (mm)	Labels Per Row	Labels Per Pkg	Rec. Ribbon
Fig. 2	WRAP-1-472	Polyimide	White	10-14g; 0.159" - 0.199" dia	0.750 (19.1)	0.500 (12.7)	0.875 (22.2)	0.790 (20.1)	1	6800	R4311
Fig. 2	WRAP-6-472	Polyimide	White	3/0-8g; 0.212" - 0.597" dia	2.000 (50.8)	3.000 (76.2)	3.125 (79.4)	2.290 (58.2)	1	1900	R4302

B-499 Nylon Cloth Material

Color: White **Finish:** Matte

Nylon cloth with permanent adhesive allows labeling in environments with heat, cold, oil and dirt. Ideal for wire and cable marking, electronic component marking, laboratory vial identification, and general labeling.

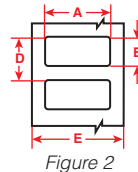
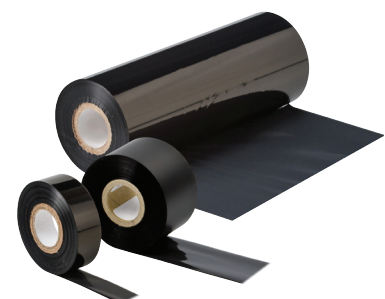


Diagram	Part Number	Material	Color	Wire Gauge	Label Width A Inch (mm)	Label Height B Inch (mm)	Labels Per Row	Labels Per Pkg	Rec. Ribbon
Fig. 2	WRAP-7-499	Nylon Cloth	White	10-22g; 0.06" - 0.199" dia	0.500 (12.7)	0.750 (19.1)	1	4500	R4311
Fig. 2	WRAP-13-499	Nylon Cloth	White	6-14g; 0.159" - 0.279" dia	1.000 (25.4)	1.000 (25.4)	1	4100	R4306
Fig. 2	WRAP-8-499	Nylon Cloth	White	2-14g; 0.159" - 0.438" dia	1.000 (25.4)	1.500 (38.1)	1	2800	R4306
Fig. 2	WRAP-9-499	Nylon Cloth	White	3/0-8g; 0.212" - 0.597" dia	2.000 (50.8)	2.000 (50.8)	1	2100	R4302

Wraptor A6500 Print Ribbons (1.000" core, ink side out.)

Ribbon Series	Catalog #	Size	Color
R4300 Wax/Resin	R4311	1.000" x 984'	Black
Strong environmental resistance against smearing and chemicals. Also, reliable, sharp-edge print quality to maximize barcode readability.	R4306	1.570" x 984'	Black
	R4302	2.360" x 984'	Black



Wraptor™ A6500 Wire ID Printer Applicator

Catalog #	Description
WRAPTOR-A6500	Wraptor A6500 Wire ID Printer* w/ Brady Workstation Product & Wire ID Suite
WRAPTOR-VBLK	Spare wrapper assembly pad

*Printer includes print driver, USB cable, USB flash drive, Stylus, Roll of WRAP-4-427, Roll of R4302 Ribbon.

For In-Line Cut & Strip Applications: Contact Brady at 1-888-272-3946 for all In-Line Cut & Strip applications. Special restrictions apply.

Printer Specifications

Description	Specialty system prints and applies labels to wires and cables making labeling faster, easier and improving your production flow.
Applications & Other Comments	Prints & wraps self-laminating and vinyl cloth materials to wires from 0.060" to 0.600" diameter. Prints and wraps under 5 seconds
Typical Throughput & Operational Hours	7000+ labels /day 24 hrs / 7 days
Print Technology & Color Capabilities	Thermal Transfer; Monochrome
Print Resolution	300 dpi
Max Print Width	2.000"
Media Widths	0.50", 1.00", 2.00"
Minimum Label Dimension	0.50" W x 0.75" L
Auto Cut-off	N/A
PC Connect or Stand Alone Operation	PC Connect or Stand Alone
Ribbon & Material Installation	Labels: Loose roll, "thread-thru" required Ribbon: Loose roll, "thread-thru" required
Label Creation & Set-up	Semi-automatic (select label part from software and label sets up)
Connectivity Options	Standard: USB, Ethernet 10/100
Compatible PC Software	Labelmark™ Software, Brady Workstation

Wraptor™ A6500
WIRE ID PRINTER APPLICATOR



Brady360®
1-Year Warranty



We have you covered.

Extend the life of your machine! Warranty coverage ensures your wire marking system is in peak running condition and gives you convenient on-site preventive service — you don't even need to leave your facility. We know you need to keep working, so you'll get a loaner to keep your business moving.

- Warranty coverage for 1 year
- No cost ground shipping for all repairs
- Part and labor included (*excludes V-Block, but does include print head*)
- Guaranteed loaner availability
- One annual on-site preventive maintenance service during coverage
- 1/2 price emergency on-site service
- Renewal available with approved printer inspection



Y4555202 MS4555202

